

Welcome! We'll start shortly.

**Expanding Collaborative Capacity to
Prevent Domestic Violence**
A Funding Announcement Webinar

PREVENTION
INSTITUTE



Expanding Collaborative Capacity to Prevent Domestic Violence

A Funding Announcement Webinar

July 12, 2018

PREVENTION
INSTITUTE



Lisa Fujie Parks

Associate Program Director



Alisha Somji

Associate Program Manager

One-year (November 2018–October 2019) planning and capacity-building grants of \$50,000 to five well-established, multisector collaboratives that see value in integrating a focus on domestic violence prevention into their work

Webinar Agenda

- A word from Blue Shield of California Foundation
- About Prevention Institute and the funding opportunity
- Background and context
- How to apply to this initiative
- Q & A

How to use this technology



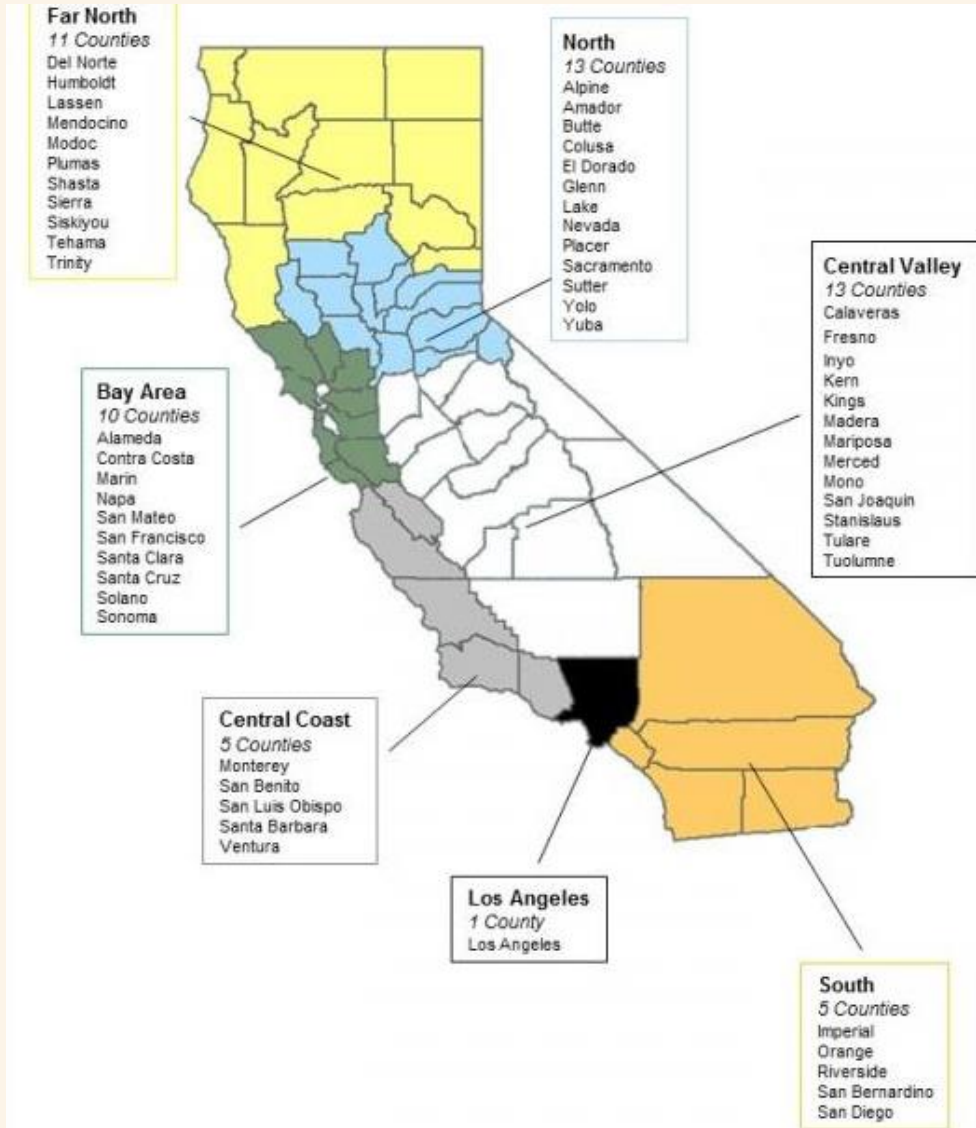
- Text chat & private chat
- PowerPoint slides
- Polling questions
- Phone

Please send a private chat message for help.

Call iLinc Technical Support at 800.799.4510.

Polling question: Where in California are you located?

- A. North and Far North
- B. Bay Area
- C. Central Valley and Coast
- D. Los Angeles Area
- E. South





Carolyn Wang Kong
Senior Program Officer
Blue Shield of California Foundation

our bold goal



To make California the **healthiest state in the country, and the state with the lowest rates of domestic violence** by leveraging the power of community and collaboration to generate change

our work focuses on



Breaking the Cycle of Domestic Violence

Violence is cyclical, generational, and can be experienced and felt over an individual's lifetime. We're working to prevent domestic violence, which takes a multigenerational approach.



Collaborating for Healthy Communities

We're working to understand what it takes to implement breakthrough collaborative models that support community health and end multigenerational domestic violence.



Designing the Future of Health

How do communities create, experience, and sustain equitable and responsive health solutions? We're working with our partners to find out how to create population health ecosystems for all.



Prevention Institute

Seeking to partner with collaboratives that:

- Are well-established and functioning with a high degree of trust
- Are comprised of representatives from the communities of focus and a variety of sectors
- Have a track record and/or focus on improving community conditions from a prevention perspective
- Do not explicitly or primarily focus on domestic violence, but see value in integrating community-level domestic violence prevention into their work at this time

Prevention Institute's role in this effort

- Site selection and administration
- Capacity building through technical assistance and coaching
- Manage a multi-site learning community
- Connect the work to additional key partners and initiatives
- Capture and disseminate lessons learned
- Catalyze action on community-level approaches to domestic violence prevention

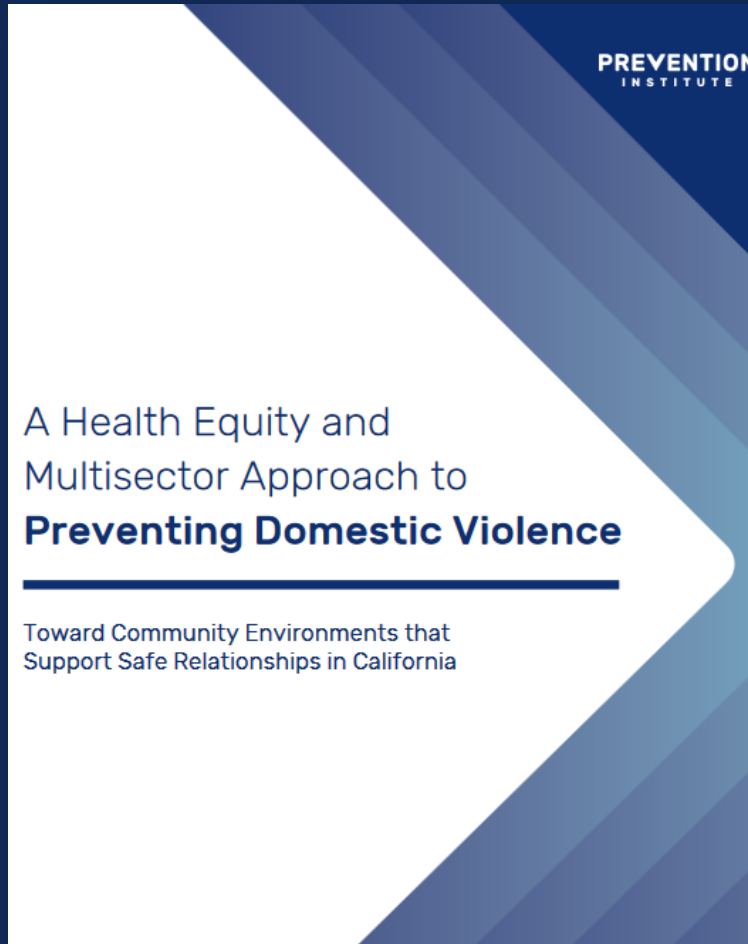
Expected Outcomes

- Greater shared understanding of domestic violence as a relationship and community issue.
- New partners recruited and/or current partnerships strengthened to reduce community-level risks and enhance community-level resilience to prevent domestic violence.
- Promotion of safe relationships and prevention of domestic violence from a community-level perspective as ongoing collaborative priorities.

Expected Outcomes continued

- Capacity and protocol developed and/or enhanced to address disclosures of past or current domestic violence that arise within the context of the collaborative's work.
- Workplans developed or updated to include community-level domestic violence prevention strategies
- Lessons learned and suggestions for how to approach this work reflected upon and shared with the statewide learning community.

Sectors Acting For Equity (SAFE) Project



Funded by the
BlueShield of
California Foundation

Thank you to our
partners at the state
and local level, across
sectors who have
provided guidance
and helped refine the
SAFE approach

Key elements of the SAFE approach

- Lead with health equity and social justice
- Change community conditions through addressing underlying contributors
- Promote community resilience
- Collaborate across sectors and social movements
- Attend to prevention and healing

Trajectory of DV and Inequities in DV





It is unreasonable to expect that people will change their behavior easily when so many forces in the **social, cultural, and physical environment** conspire against such change.

- Institute of Medicine



PEOPLE

- Harmful norms & culture
- Low participation & willingness to act for the common good
- Weak social networks & trust

PLACE

- Harmful media & ways of promoting products
- Housing insecurity

EQUITABLE OPPORTUNITY

- Lack of living wages & local wealth

Community Determinants of Domestic Violence

PEOPLE

- Healthy norms & culture
- Participation & willingness to act for the common good
- Strong social networks & trust


PLACE

- Healthy media & ways of promoting products
- Safe, stable, and affordable housing

EQUITABLE OPPORTUNITY

- Lack of living wages & local wealth

Community Determinants of Safe Relationships



You really did connect the dots and did your research about risk and protective factors related to DV.

The framework resonates!

*And, it includes determinants of DV and of safe relationships. In other words, the framework **creates a pathway forward.***

– Webinar participant



How to Apply

- **This is a two-step application process:**

Organizations must submit a Letter of Interest (LOI) by **August 6, 2018** (no later than 5:00 PM PST)

Selected LOI applicants will be invited to submit a full proposal application.

How to Apply



- Letter of Interest (LOI) due August 6, 2018.
- Narrative section should not exceed 3 pages in length. Includes sections on:

Community

Applicant strengths and capacity

Commitment to expand capacity for community-level domestic violence prevention

Budget

Decision-making criteria

- Geographic diversity of the State
- Communities and populations experiencing significant inequities in rates of domestic violence
- Unique strengths and present opportunities for creativity and learning to help end domestic violence in California.
- Commitment to expand capacity for community-level domestic violence prevention
- Collaborative strength and capacity
- Lead agency capacity

Important Dates to Remember

| | |
|--|-----------------------|
| Funding announcement released | July 9 |
| Webinar on funding announcement & LOI | July 12, 1-2 pm PST |
| Deadline to submit LOI | August 6, 5pm PST |
| Invitations to submit full proposal application sent to selected applicants | August 27 |
| Deadline for full proposal application | September 24, 5pm PST |
| Funding award announcement | October 12 |
| Grant period begins | November 1 |
| Kick-off meeting in Oakland | November 7-9 |



**What questions
do you have?**

Correspondence and Questions



- All correspondence and questions relating to this call are to be submitted to abena@preventioninstitute.org
- As appropriate, questions that are submitted will be posted with responses on our webpage: <https://www.preventioninstitute.org/projects/expanding-collaborative-capacity-prevent-domestic-violence>

**Thank you for
participating!**

Good luck with your LOIs!